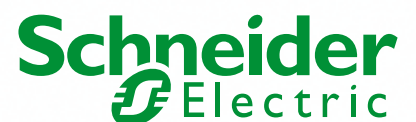




How do they measure up?

**The Top 50
Electrical Contractor
Report 2009**

in association with Schneider Electric



Figures that reflect the new realities



Ben Cronin
 Editor *Electrical Times*
"The fact that 40 companies in our Top 50 are still reporting profits must surely be a good sign"

We published our last Top 50 survey as clouds began to gather for the economy and problems in the banking sector were just beginning to change the landscape for the construction industry.

At the time, however, we reminded readers that our 2008 edition wouldn't reflect the worst of the recession because the figures quoted were for the period 2007 to early 2008 – before the credit crunch really began to bite.

Our 2009 survey – taken from accounts for April 2008 to April 2009 – is therefore much more likely to reflect any of the effects of the downturn as they finally filter through.

This would probably explain why ten of the companies featured in our overall Top 50 have reported a loss for this financial year, but given the prevailing feeling of pessimism, the fact that 40 are still reporting profits –

and in some cases extremely good ones at that – must surely be a good sign.

It's also reassuring to see that the majority of companies in the Top 50 appear to be maintaining similar or even slightly higher numbers of employees when compared with previous staffing levels. It has to be hoped that firms are not cutting costs by turning to unskilled labour, or by reducing training programmes.

Once again, we would like to emphasise the fact that we have made every effort to make this report as accurate as possible but would like to stress that it is always difficult to separate financial data where companies are involved in disciplines other than electrical contracting.

ABB Building Systems has dropped off the list, having topped the table last year, after the holding company divested itself of its building services arm.

Growth in Profit

Growth in profit rank	Latest rank	Trading title 1	Latest Pre tax profit £000	Previous Pre tax profit £000	Movement in electrical profit £000
1	1	Southern Electric Contracting Ltd	39353	31860	7493
2	7	T Clarke Plc	13396	8166	5230
3	8	Ballyrogan Hldgs. Ltd	10116	7046	3070
4	10	Norland Hldgs. Ltd	7287	4310	2977
5	4	Balfour Beatty Engineering Svcs. (Hy) Ltd	12291	9908	2383
6	19	Murphy Ltd	77	-2259	2336
7	41	Piggott & Whitfield Ltd	250	-1822	2072
8		Halsall Electrical Ltd	4845	2783	2062
9	11	FES Ltd	7549	5564	1985
10	13	Shepherd Engineering Svcs. Ltd	2511	1303	1208
11	14	Dodd Group	5406	4352	1054
12	53	& Hldgs. Ltd	293	-552	845
13	84	A R H Electrical Svcs. Ltd	239	-564	803
14	26	Essex Svcs. Gp. Plc	2418	1661	757
15	5	Northern Electric Plc	109700	109000	700
16	25	Derry Building Svcs. Ltd	1803	1169	634
17	28	W.T. Parker Gp. Ltd.	997	388	609
18	36	P.I.P. Electrics Ltd	1612	1047	565
19	35	Bethell Power Svcs. Ltd	1	-545	546
20	62	R.F. Webb & Son Ltd	207	-208	415
21	27	J Tomlinson (Hldgs.) Ltd	937	635	302
22	39	L J Monks Building Svcs. Ltd	421	121	300
23	67	Harvey Gp. P L C	-146	-412	266
24	65	Chris Bowker Ltd	246	83	163

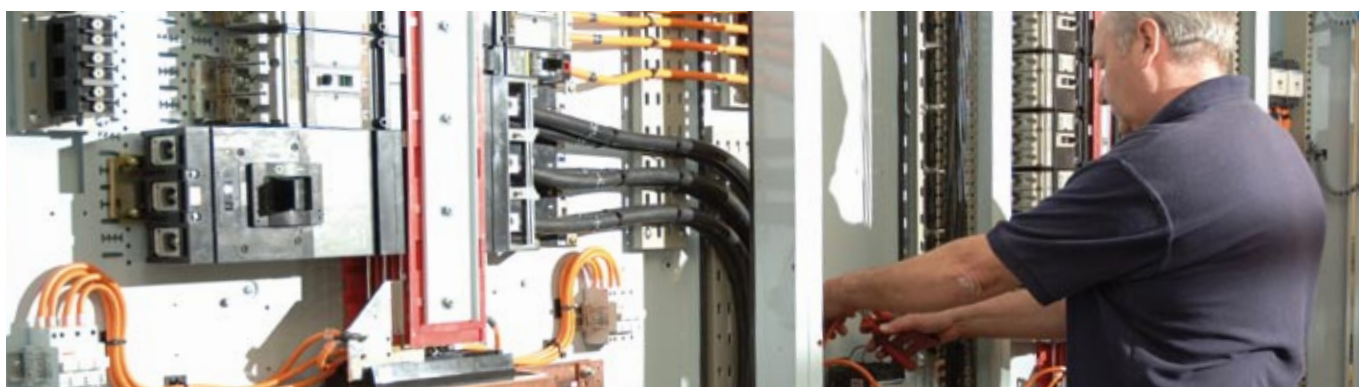
Every effort has been made to ensure the accuracy of the results in this report.

Data has been sourced from annual reports submitted at Companies House and directly from many of the firms mentioned.

Note: The data contained within this report was not provided by Schneider Electric and the company accepts no responsibility for any errors or omissions.



Schneider Electric is moving with the times



Growth in Turnover

Growth in turnover rank	Latest rank	Trading title 1	Latest turnover £000	Previous turnover £000	Growth in turnover
1	4	Balfour Beatty Engineering Svcs. (Hy) Ltd	288999	196588	92411
2	1	Southern Electric Contracting Ltd	482195	404067	78128
3	8	Ballyrogan Hldgs. Ltd	216773	150431	66342
4	13	Shepherd Engineering Svcs. Ltd	128577	88849	39728
5	7	T Clarke Plc	223725	193845	29880
6	10	Norland Hldgs. Ltd	150793	122922	27871
7	9	Skanska Rashleigh & Weatherfoil	152000	130000	22000
8	17	Gratte Bros Ltd	80169	58915	21254
9	6	Lorne Stewart Plc	224018	206079	17939
10	19	Murphy Ltd	74688	59988	14700
11	14	Dodd Group	90467	75880	14587
12	12	E D F Energy Contracting Ltd	135455	124121	11334
13	16	Killby & Gayford Ltd	86862	76183	10679
14	15	Boulting Gp. Plc	87440	77928	9512
15	40	Uni-Data U.K Ltd	19031	10920	8111
16	21	Arthur McKay & Co. Ltd.	54824	47225	7599
17	2	Bailey Building Services	413254	406616	6638
18	39	L J Monks Building Svcs. Ltd	20158	13641	6517
19	27	J Tomlinson (Hldgs.) Ltd	39434	33259	6175
20	11	FES Ltd	145900	140006	5894
21	26	Essex Svcs. Gp. Plc	40609	35446	5163
22	34	Mitie Gp. Plc	27569	22485	5084
23	45	Antrim Electrical & Mechanical Engineers Ltd	15313	10526	4787
24	29	Imtech G&H Ltd	35461	31228	4233
25	32	Parkersell Ltd	32993	28829	4164
26	47	Blackbourne Electrical Co. Ltd	14169	10786	3383
27	22	Jarvis Gp. Ltd	49993	46934	3059
28	48	Guardian E C L Ltd	13754	10767	2987
29	25	Derry Building Svcs. Ltd	43641	40849	2792
30	63	Gilks (Nantwich) Ltd	8692	5978	2714
31	80	C.F. Roberts (Electrical Contractors) P L C	5690	3198	2492
32	23	Nie Powerteam Ltd	49176	46710	2466
33	53	A.N.D. Hldgs. Ltd	10969	8812	2157
34	55	Lowe & Oliver Ltd	10665	8586	2079
35	41	Piggott & Whitfield Ltd	18002	16073	1929

Note: A large number of well-known names from the industry have managed to register a growth in turnover in spite of difficult trading conditions, but the figures this year are much more modest than in our last survey.

This year we have also chosen to rank the companies according to the actual amount (in Pounds Sterling) by which their turnover has grown rather than by calculating it as a percentage of overall turnover.

Note: This table is based solely on those companies that recorded a positive growth in turnover for which figures were available, excluding estimates.

Our product range encompasses many internationally renowned brands but we are moving into the future with one Schneider Electric brand – still the same great products but just one easy name to remember.

Schneider
Electric



Return on Funds

Return on funds rank	Latest rank	Trading title 1	Latest Pre tax profit £000	Latest Share Capital & res £000	Return on Shareholders Funds
1	98	EIC (Hldgs.) Ltd	2519	300	8.40%
2	n/a	Halsall Electrical Ltd	4845	2351	2.06%
3	26	Essex Svcs. Gp. Plc	2418	2129	1.14%
4	81	E.C.S.G. Ltd	323	291	1.11%
5	94	R N R London Ltd	191	181	1.06%
6	80	C.F. Roberts (Electrical Contractors) P L C	309	294	1.05%
7	89	Brenwards Ltd	319	332	0.96%
8	95	M & M Electrical Ltd	287	344	0.83%
9	39	L J Monks Building Svcs. Ltd	421	579	0.73%
10	79	C H N Electrical Svcs. Ltd	106	155	0.68%
11	27	J Tomlinson (Hldgs.) Ltd	937	1589	0.59%
12	11	FES Ltd	7549	13575	0.56%
13	1	Southern Electric Contracting Ltd	39353	77222	0.51%
14	90	P.C.L. (Nationwide) Ltd	262	536	0.49%
15	74	R & R Electrical Svcs. Ltd	318	683	0.47%
16	10	Norland Hldgs. Ltd	7287	15980	0.46%
17	70	McGoff & Vickers Ltd	205	463	0.44%
18	13	Shepherd Engineering Svcs. Ltd	2511	5821	0.43%

Note: Gone are the days of soaring share prices and large dividends in the electrical contracting sector. Last year, NIE Powerteam Ltd topped the table with a return on shareholder funds of 353.98%. This year, EIC Holdings Ltd tops the table with a figure of 8.4%.



Stewart Gregory
Schneider Electric

"We are continuing to pioneer the latest technologies to meet the market's growing demand for energy efficiency"

Focus on added value to ride out the turbulence

A lot has happened in the last few years; the world's economy was buoyant, then the UK was officially declared in recession, and more recently, we were promised the 'green shoots' of recovery. The lack of cash has significantly impacted on the construction industry, first affecting the residential market then the private commercial sector, with Government backed projects being the big hope.

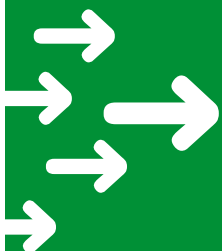
In the current climate, contractors are bidding for the same projects as the volume of work decreases. This is placing pressure on price, and raises the question: is a company's main objective employment or profit?

Organisations are using the situation to rationalise their supply chain and move towards preferred supplier status, offering fewer companies more work. However, with these actions comes risk. In the current climate it has never been more pertinent for contractors to be reassured about the stability of their

partners, the quality and reliability of the products, and the ease at which they can be installed.

While there may be a decline in new build projects, there is still an opportunity in the market by looking at energy efficiency. At Schneider Electric, we are continuing to pioneer the latest technologies to meet the market's growing demand for energy efficiency and encouraging businesses to make the most of their energy. Metering and monitoring is a strong growth area for us, as customers recognise that by identifying their energy consumption, they can make positive changes to lower their operating costs and improve their green credentials.

Focusing on adding value to projects will help contractors ride out the turbulent times. Expanding their knowledge and expertise will provide them with the skills to embrace more diverse opportunities and help is always at hand for ideas and solutions.



Always one step ahead of the game

Profit per Employee

Profit per employee rank	Latest rank	Trading title 1	Latest Pre tax profit £000	Latest no. of Employees	Profit per employee (£s)
1	5	Northern Electric Plc	109700	1354	81019
2	36	P.I.P. Electrics Ltd	1612	42	38381
3	26	Essex Svcs. Gp. Plc	2418	96	25188
4	16	Killby & Gayford Ltd	3581	304	11780
5	7	T Clarke Plc	13396	1433	9348
6	1	Southern Electric Contracting Ltd	39353	4680	8409
7	18	Metnor Gp. Plc	2146	258	8318
8	25	Derry Building Svcs. Ltd	1803	227	7943
9	29	Imtech G&H Ltd	1956	257	7611
10	24	Quartzelec Ltd	3727	504	7395
11	14	Dodd Group	5406	737	7335
12	4	Balfour Beatty Engineering Svcs. (Hy) Ltd	12291	1676	7334
13	72	Bex Contracts P L C	155	25	6200
14	53	A.N.D. Hldgs. Ltd	293	51	5745
15	15	Boulting Gp. Plc	3945	741	5324
16	10	Norland Hldgs. Ltd	7287	1371	5315
17	11	FES Ltd	7549	1431	5275
18	22	Jarvis Gp. Ltd	1091	231	4723
19	83	K.J.Edwards (Electrical) Ltd	297	64	4641
20	8	Ballyogan Hldgs. Ltd	10116	2713	3729
21	63	Gilks (Nantwich) Ltd	305	85	3588
22	6	Lorne Stewart Plc	6113	1706	3583
23	13	Shepherd Engineering Svcs. Ltd	2511	735	3416
24	39	L J Monks Building Svcs. Ltd	421	125	3368
25	84	A R H Electrical Svcs. Ltd	239	73	3274
26	69	R. Dunham (J.K) Ltd	197	61	3230
27	21	Arthur McKay & Co. Ltd.	1726	541	3190
28	62	R.F. Webb & Son Ltd	207	65	3185
29	27	J Tomlinson (Hldgs.) Ltd	937	324	2892
30	28	W.T. Parker Gp. Ltd.	997	354	2816
31	56	Rayfern Ltd	323	121	2669
32	40	Uni-Data U.K Ltd	303	114	2658
33	66	Agrilek Ltd	287	120	2392
34	65	Chris Bowker Ltd	246	107	2299
35	70	McGoff & Vickers Ltd	205	101	2030
36	41	Piggott & Whitfield Ltd	250	134	1866
37	23	Nie Powerteam Ltd	1710	927	1845
38	38	South Eastern Electrical P L C	189	104	1817
39	44	E-Tech Gp. Ltd	256	142	1803
40	55	Lowe & Oliver Ltd	188	105	1790
41	57	I C E L Gp. Ltd	212	133	1594
42	87	E I N W Ltd	114	72	1583
43	2	Bailey Building Services	6046	3867	1563

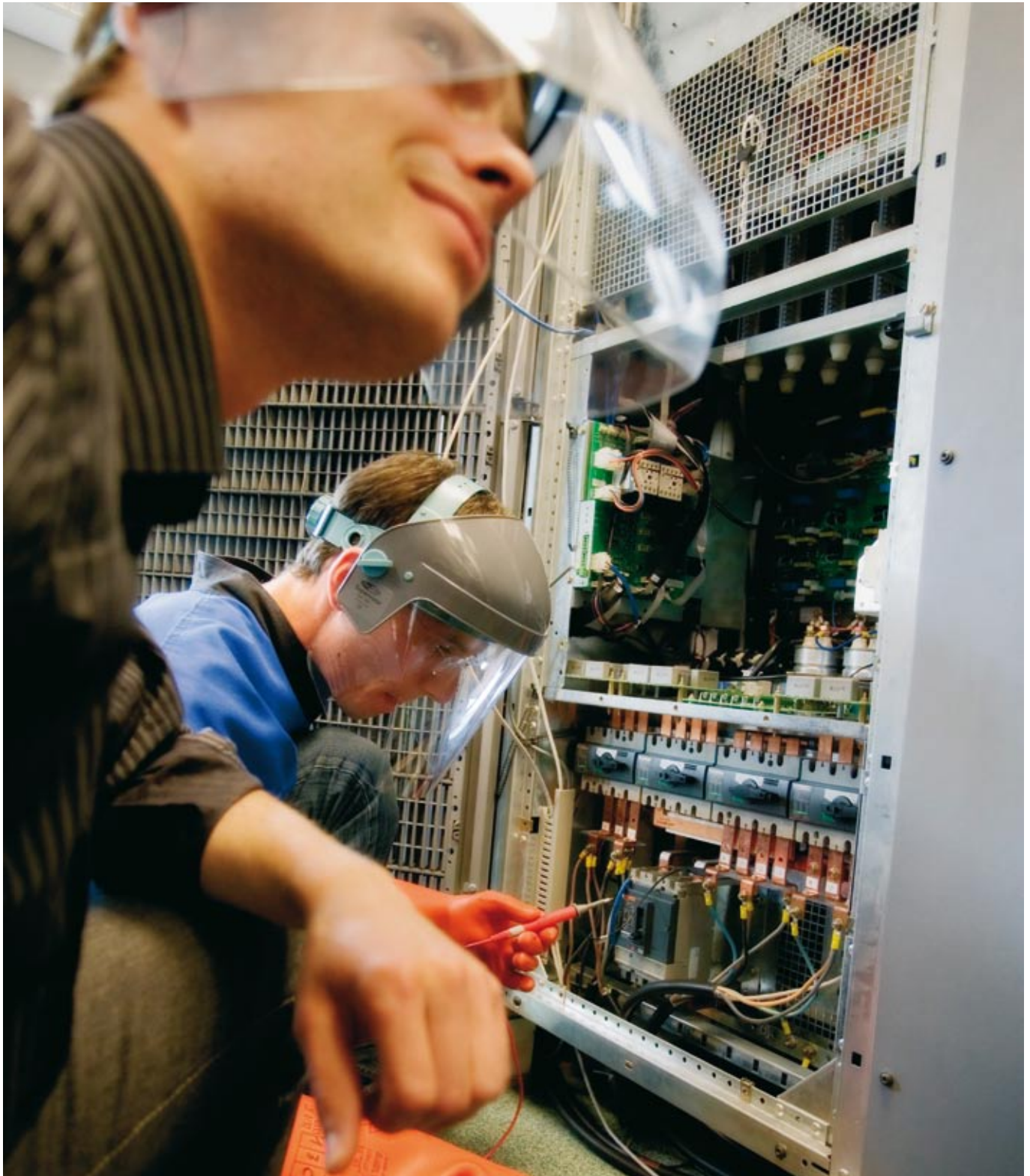
"In the current climate it has never been more pertinent for contractors to be reassured about the stability of their partners, the quality and reliability of the products, and the ease at which they can be installed."

Note: Profit per employee is calculated by dividing profits by the number of employees in a company. This is therefore a key measure of a company's productivity. Northern Electric Plc climbs from third place last year to first this year after managing to modestly downsize its workforce without leaving a significant dent on its profits.



We are committed to continued research and development, meaning you can rely on us to provide you with the latest technologies. Just look at our medical bedhead fully integrated trunking, or our range of Integrated Installation Systems.

Schneider
Electric



Don't compromise your reputation



Make the most of your energy

It's easy with Schneider Electric's four steps
to energy efficiency; *measure, fix the basics,
automate, and monitor and improve.*



Many contractors are faced with the issue of keeping project costs down, while trying to create modern 'intelligent' buildings, which have less impact on the environment. But can costs be kept low and energy efficiency achieved simultaneously? The answer is yes it can, if specialists like Schneider Electric are involved in your project.



Lean and Green

In difficult economic times it's important that both new and refurbished buildings are designed and developed with future needs in mind.

To disregard energy efficiency as an additional expenditure is short sighted and could result in obsolete buildings in only a few years, as more legislation is introduced and demand for efficient buildings increases.

Energy efficiency should not be considered a burden, an unachievable goal or an expense that can be shaven off the cost of a building. In fact it should be seen as an investment, which will see a return as operational costs are reduced. In addition, energy saving products can be used to create intelligent buildings, where the building reacts to the specific needs of the occupant.

Creating energy efficient buildings can be made simple. Schneider Electric can partner with you to provide a complete structure, integrating lighting, heating, hot water, security and air conditioning into

an intelligent management system. In doing so, the building can be controlled and monitored as a whole to ensure it uses energy as efficiently as possible. We can offer you a full range of components, which have been designed for quick and easy installation and meet all British standards.

We are committed to combating counterfeiting, so you can be confident you are using the best quality products for your project, keeping you and your customers safe and maintaining your good reputation. We can then support you making improvements, repairs and maintenance throughout the lifetime of the building.

But, let's start at the beginning. What do we need to do to create an energy efficient building? At Schneider Electric we advise contractors to follow the four steps to energy efficiency; measure, fix the basics, automate, and monitor and improve – a holistic approach that leaves no stone unturned.





Measure

Whether in a new or existing building, it's always important to measure energy usage, after all, without measurement, it can't be fully understood and so will never be managed.

From simply advising on reviewing the electricity bills to installing energy metering and undertaking an energy audit, contractors will be offering an added value service.

Sub-meters can be installed in existing buildings or new build projects, so that energy usage can be attributed to certain areas of the building or systems within it, throughout the life of the property. In refurbishments an energy audit can be undertaken before any energy saving products are installed, to measure and establish existing patterns of use and to highlight any areas of excessive consumption.

We can assist you by sending in energy experts to undertake these audits before making recommendations for saving energy and therefore cost. For example, together, we can specify and install a kilo-Watt-hour meter such as the EN40 to measure the consumption of the different loads over a significant period. Its compact size allows it to be incorporated into consumer units, distribution boards and switch boards so it is suitable for any application.



Fix the basics

Once the areas of potential reduction have been identified, the next step is to action the information to 'fix the basics'.

Using power factor correction equipment can dramatically reduce a plant's running costs and is simply installed making a sound investment and an ideal recommendation for contractors to make. Customers should be advised to adopt simple behavioural changes, like switching off lighting or IT equipment when not required to make significant additional savings. These first two steps alone can make dramatic differences, for example Schneider Electric saved more than 20% of its energy costs by adopting the measure and fix the basics philosophy across its UK sites. However, to fully control usage contractors should look to install automated products.



Automate

The automate phase urges contractors to advise on and install simple technologies such as time switches, presence detection, relays and variable speed drives (VSDs) in order to save energy.

Lighting can account for up to 40 per cent of a building's total energy consumption so, when looking to improve energy efficiency, it is a good place to start. Our control command range offers a vast range of energy efficient lighting controls, allowing easy and inexpensive installation to both new build and retrofit installations, so a suitable lighting strategy and solution can be found for every type of space. Lubio lighting control can be used for lighting car parks and playing fields.

Zones with irregular usage patterns, for example hallways, bathrooms/toilets, stock rooms and meeting rooms, can take advantage of controls such as presence detection and impulse relays. More frequently used spaces, such as living/reception areas, workshops, and offices can utilise timers and environmental sensors, including thermostats and light level detectors to react to surroundings.

Sometimes knowing which method to use is difficult. We can help you to identify patterns of usage within the building to make sure you install the best product for the job. We can also help create strategies for heating, air conditioning, security and water heating to ensure every system within the building is as efficient as possible.

It's estimated more than 60 per cent of energy used by UK companies is to circulate fluids or air with pumps and fans, and only 10 per cent of these are currently driven by variable speed drives. By installing VSDs, energy consumption can be reduced by up to 50 per cent, giving massive potential to reduce fuel bills and improve green credentials. Our Altivar range boasts the widest choice of drives on the UK market, so there is a solution for every situation.

These are just a few of the controls that can be used to reduce energy consumption and, along with many others, can be used either independently or as part of a complete building management system. This is when switches and sensors are linked up to devices such as Clipsal's C-BUS lighting control system and TAC's building management system, which allow for full control of the building's systems, as well as monitoring and analysing energy trends and energy consumption to manage costs well into the future.





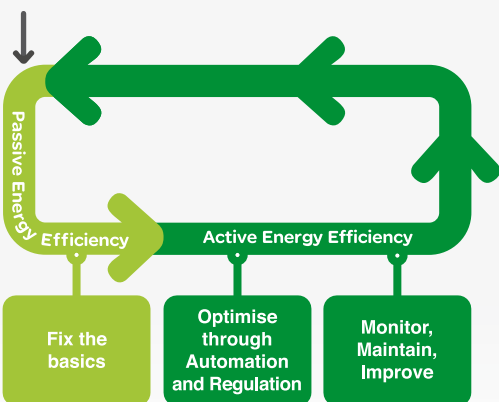
Monitor and improve

Experience shows that sustained energy savings can only be realised through continued vigilance, which is why the final phase is called monitor and improve.

Contractors need to be able to advise clients long term and by being aware of the ever emerging technologies, will maintain and improve a client's energy efficiency through integrated energy efficient design. By identifying which controls are working most effectively you can help evaluate return on investment and implement further improvements throughout the building.

For example, by using our Compact NSX moulded case circuit breakers, which feature integrated measurement functions, you can monitor the power consumption trends of the equipment to provide a chronological account of energy usage.

Energy Audit & Measure



Low consumption devices, insulation material, power factor correction,

HVAC control, lighting control, variable speed drives,

Meters installation, monitoring services, EE analysis software.

Repair and maintenance

Using products from one supplier ensures solutions are completely compatible, meaning they can be seamlessly integrated, while maintenance and repair is made simpler. You can call upon Schneider Electric throughout any stage of the project from specification through to repair and maintenance, to ensure the building is equipped with the most up to date technologies and solutions, so you can rest assured your customers will benefit from the best service available.

Time = money

As a contractor, you need to be confident that installing these products isn't complicated and won't take hours of reading manuals and instructions before you've even started fitting anything. We know this, so we have developed a range of Integrated Installation Systems (IIS) that are simple to install, factory tested, and manufactured to the highest standards. These 'plug and play' products will save you installation time, reduce costly call backs and give you peace of mind that your systems are built to last.

Adding value

Installing energy efficient products should not be seen as an additional cost but should be promoted as an investment, which will save your customers money in the long run. Offering energy efficient solutions can help your customers to save money on fuel bills and boost their green credentials. In addition, by clearly understanding the financial and environmental benefits of them, contractors can utilise their expertise to enhance the compliance, quality, value and profitability of their offer as well as present a socially responsible image for their business.

Your partner of choice

By choosing Schneider Electric you are partnering with a company who is committed to protecting the environment. Not only do we always strive to improve our own energy efficiency, we provide systems and products to help you and your customers use electricity efficiently and conserve energy.

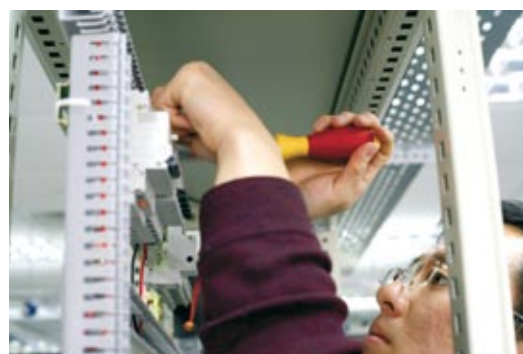
As a global company we are able to offer a stable hand, guiding you through every step of the way in creating energy efficient buildings. We can offer you on-site training days and online support to share the great expertise we have and make sure you are up-to-date with the latest technologies and energy efficient offers available to help deliver world class sustainable projects and we can help you to help any organisation make the most of their energy.

For more information call us on 0870 608 8 608 or visit www.schneider-electric.co.uk



Return on Sales

Return on sales rank	Latest rank	Trading title 1	Latest Turnover £000	Latest Pre tax profit £000	Return on sales
1	5	Northern Electric Plc	271200	109700	40.45%
2	1	Southern Electric Contracting Ltd	482195	39353	8.16%
3	24	Quartzelec Ltd	47157	3727	7.90%
4	95	M & M Electrical Ltd	3731	287	7.69%
5	89	Brenwards Ltd	4478	319	7.12%
6	85	Hollywell Building Svcs. Ltd	4810	310	6.44%
7	90	P.C.L. (Nationwide) Ltd	4236	262	6.19%
8	36	P.I.P. Electrics Ltd	26771	1612	6.02%
9	7	T Clarke Plc	223725	13396	5.99%
10	14	Dodd Group	90467	5406	5.98%
11	26	Essex Svcs. Gp. Plc	40609	2418	5.95%
12	81	E.C.S.G. Ltd	5598	323	5.77%
13	83	K.J.Edwards (Electrical) Ltd	5356	297	5.55%
14	29	Imtech G&H Ltd	35461	1956	5.52%
15	80	C.F. Roberts (Electrical Contractors) P L C	5690	309	5.43%
16	11	FES Ltd	145900	7549	5.17%
17	94	R N R London Ltd	3794	191	5.03%
18	10	Norland Hldgs. Ltd	150793	7287	4.83%
19	84	A R H Electrical Svcs. Ltd	4954	239	4.82%
20	8	Ballyrogan Hldgs. Ltd	216773	10116	4.67%
21	74	R & R Electrical Svcs. Ltd	6906	318	4.60%
22	15	Boulting Gp. Plc	87440	3945	4.51%
23	78	Waldon Electrical Contractors Ltd	5711	255	4.47%
24	4	Balfour Beatty Engineering Svcs. (Hy) Ltd	288999	12291	4.25%
25	25	Derry Building Svcs. Ltd	43641	1803	4.13%
26	16	Killby & Gayford Ltd	86862	3581	4.12%
27	63	Gilks (Nantwich) Ltd	8692	305	3.51%
28	23	Nie Powerteam Ltd	49176	1710	3.48%
29	66	Agrilek Ltd	8456	287	3.39%
30	64	A.F. Connell Ltd	8676	291	3.35%
31	76	Techelec (Brighton) Ltd	6814	227	3.33%
32	21	Arthur McKay & Co. Ltd.	54824	1726	3.15%
33	56	Rayfern Ltd	10583	323	3.05%
34	91	S. Finlayson & Son Ltd	4041	119	2.94%
35	65	Chris Bowker Ltd	8610	246	2.86%
36	18	Metnor Gp. Plc	76002	2146	2.82%
37	28	W.T. Parker Gp. Ltd.	35631	997	2.80%
38	75	Beaumont Electrical Ltd	6826	189	2.77%
39	6	Lorne Stewart Plc	224018	6113	2.73%
40	53	A.N.D. Hldgs. Ltd	10969	293	2.67%
41	70	McGoff & Vickers Ltd	7874	205	2.60%
42	87	E I N W Ltd	4564	114	2.50%
43	69	R. Dunham (U.K) Ltd	8007	197	2.46%
44	27	J Tomlinson (Hldgs.) Ltd	39434	937	2.38%
45	62	R.F. Webb & Son Ltd	9045	207	2.29%
46	22	Jarvis Gp. Ltd	49993	1091	2.18%
47	72	Bex Contracts P L C	7242	155	2.14%



Return on sales is calculated by taking profit as a percentage of turnover. This is the third consecutive year that Northern Electric Plc has topped this table with an impressive 40.45%.



We are committed to manufacturing quality assured, safety tested products. Don't compromise your business and yourself by opting for substandard goods, it's just not worth the risk.

Top 20 Profit Rank

Profit rank	Top 50 rank	Trading title 1	Latest Pre tax profit £000
1	5	Northern Electric Plc	109700
2	1	Southern Electric Contracting Ltd	39353
3	7	T Clarke Plc	13396
4	4	Balfour Beatty Engineering Svcs. (Hy) Ltd	12291
5	8	Ballyrogan Hldgs. Ltd	10116
6	11	FES Ltd	7549
7	10	Norland Hldgs. Ltd	7287
8	6	Lorne Stewart Plc	6113
9	2	Bailey Building Services	6046
10	14	Dodd Group	5406
11	n/a	Halsall Electrical Ltd	4845
12	15	Boulting Gp. Plc	3945
13	24	Quartzelec Ltd	3727
14	16	Killby & Gayford Ltd	3581
15	98	EIC (Hldgs.) Ltd	2519
16	13	Shepherd Engineering Svcs. Ltd	2511
17	26	Essex Svcs. Gp. Plc	2418
18	18	Metnor Gp. Plc	2146
19	29	Imtech G&H Ltd	1956
20	25	Derry Building Svcs. Ltd	1803



Northern Electric Plc also tops this table ranking companies by the overall size of their pre-tax profits. T Clarke climbs from ninth last time to third this time.

Note: This table is based solely on those companies for which figures were available.



Your safety is paramount to us

Changes in Rank

latest rank	Previous rank	Change in rank	Trading title 1
27	40	13	J Tomlinson (Hldgs.) Ltd
38	47	9	South Eastern Electrical P L C
15	23	8	Boulting Gp. Plc
57	65	8	I C E L Gp. Ltd
37	45	8	Eyre Electrical Ltd
36	43	7	P.I.P. Electrics Ltd
30	37	7	Renelec Ltd
34	41	7	Mitie Gp. Plc
21	26	5	Arthur McKay & Co. Ltd.
51	55	4	Finchpalm Ltd
1	4	3	Southern Electric Contracting Ltd
10	13	3	Norland Hldgs. Ltd
17	20	3	Gratte Bros Ltd
7	9	2	T Clarke Plc
8	10	2	Ballyrogan Hldgs. Ltd
16	18	2	Killby & Gayford Ltd
25	27	2	Derry Building Svcs. Ltd
23	25	2	Nie Powerteam Ltd
6	7	1	Lorne Stewart Plc
2	3	1	Bailey Building Services
14	15	1	Dodd Group
13	14	1	Shepherd Engineering Svcs. Ltd
5	5	0	Northern Electric Plc
11	11	0	FES Ltd
24	24	0	Quartzelec Ltd
12	12	0	E D F Energy Contracting Ltd
18	17	-1	Metnor Gp. Plc
22	21	-1	Jarvis Gp. Ltd
3	2	-1	Emcor Gp. (U.K) P L C
72	70	-2	Bex Contracts P L C
39	36	-3	L J Monks Building Svcs. Ltd
9	6	-3	Skanska Rashleigh & Weatherfoil
28	22	-6	W.T. Parker Gp. Ltd.
89	76	-13	Brenwards Ltd
55	30	-25	Lowe & Oliver Ltd

J Tomlinson (Holdings) Ltd has made the most headway in the Top 50, jumping 13 places from 40 to 27. Lowe & Oliver Ltd drops out of the Top 50, falling 25 places to number 66.



Note: This table features companies for which comparable latest and previous edition rankings are available. The rankings should be assessed in conjunction with the main table showing the latest and previous financial periods analysed.



Our main focus is keeping people safe and by offering quality, reliable electrical solutions, together we can achieve this.

Schneider
Electric

50

The Top 50 Electrical Contractors 2009

Latest ranking ec div to	Trading title 1	Latest Turnover £000	Latest Pre tax profit £000	Latest no. of Employees
1	Southern Electric Contracting Ltd	482195	39353	4680
2	Bailey Building Services	413254	6046	3867
3	Emcor Gp. (U.K) P L C	378699	-4595	3167
4	Balfour Beatty Engineering Svcs. (Hy) Ltd	288999	12291	1676
5	Northern Electric Plc	271200	109700	1354
6	Lorne Stewart Plc	224018	6113	1706
7	T Clarke Plc	223725	13396	1433
8	Ballyrogan Hldgs. Ltd	216773	10116	2713
9	Skanska Rashleigh & Weatherfoil	152000	-	-
10	Norland Hldgs. Ltd	150793	7287	1371
11	FES Ltd	145900	7549	1431
12	E D F Energy Contracting Ltd	135455	-26763	912
13	Shepherd Engineering Svcs. Ltd	128577	2511	735
14	Dodd Group	90467	5406	737
15	Boulting Gp. Plc	87440	3945	741
16	Killby & Gayford Ltd	86862	3581	304
17	Gratte Bros Ltd	80169	86	257
18	Metnor Gp. Plc	76002	2146	258
19	Murphy Ltd	74688	77	698
20	Hills Electrical & Mechanical P L C	65623	-7568	717
21	Arthur McKay & Co. Ltd.	54824	1726	541
22	Jarvis Gp. Ltd	49993	1091	231
23	Nie Powerteam Ltd	49176	1710	927
24	Quartzelec Ltd	47157	3727	504
25	Derry Building Svcs. Ltd	43641	1803	227
26	Essex Svcs. Gp. Plc	40609	2418	96
27	J Tomlinson (Hldgs.) Ltd	39434	937	324
28	W.T. Parker Gp. Ltd.	35631	997	354
29	Imtech G&H Ltd	35461	1956	257
30	Renelec Ltd	33614	100	228
31	Axima Building Svcs. Ltd	33598	-6295	148
32	Parkersell Ltd	32993	149	567
33	Phoenix Electrical Co. Ltd	28717	-4013	-
34	Mitie Gp. Plc	27569	-415	124
35	Bethell Power Svcs. Ltd	27141	1	280
36	P.I.P. Electrics Ltd	26771	1612	42
37	Eyre Electrical Ltd	21522	-648	222
38	South Eastern Electrical P L C	20469	189	104
39	L J Monks Building Svcs. Ltd	20158	421	125
40	Uni-Data U.K Ltd	19031	303	114
41	Piggott & Whitfield Ltd	18002	250	134
42	J.H.Shouksmith & Sons Ltd	17980	302	208
43	Opnview Gp. Ltd	17361	-171	114
44	E-Tech Gp. Ltd	16182	256	142
45	Antrim Electrical & Mechanical Engineers Ltd	15313	118	200
46	T S S R Hldgs. Ltd	14831	-1433	147
47	Blackbourne Electrical Co. Ltd	14169	-1641	133
48	Guardian E C L Ltd	13754	37	100
49	Vear Building Svcs. Ltd	13309	71	106
50	J.Brand Ltd	11745	204	146



Maximise your potential

Previous Turnover £000	Previous Pre tax profit £000	Previous no. of Employees	Latest Share Capital & res £000	Latest ranking ec div to
404067	31860	4402	77222	1
406616	13455	3752	46748	2
415304	5760	3358	21900	3
196588	9908	1405	42871	4
282000	109000	1344	1489800	5
206079	7836	1749	16180	6
193845	8166	1541	32472	7
150431	7046	1539	66685	8
130000	-	-	-	9
122922	4310	1165	15980	10
140006	5564	1244	13575	11
124121	2116	975	8648	12
88849	1303	663	5821	13
75880	4352	696	22573	14
77928	4066	618	10286	15
76183	3633	286	8716	16
58915	196	229	2416	17
84049	3095	281	42872	18
59988	-2259	676	4935	19
68396	215	700	-3266	20
47225	2718	516	8553	21
46934	2034	229	10769	22
46710	1897	912	13186	23
50197	5216	489	14613	24
40849	1169	222	5566	25
35446	1661	81	2129	26
33259	635	304	1589	27
49384	388	355	5546	28
31228	2149	245	6684	29
35075	338	241	5245	30
36198	-6011	274	-3166	31
28829	385	534	12395	32
51008	251	166	2716	33
22485	1071	126	1972	34
27750	-545	303	1524	35
26010	1047	48	6754	36
21716	863	225	1366	37
21148	437	104	2908	38
13641	121	110	579	39
10920	350	80	2605	40
16073	-1822	149	-152	41
20411	748	196	2644	42
21228	61	120	556	43
-	328	125	692	44
10526	5	112	999	45
-	-	-	-1081	46
10786	-39	152	1882	47
10767	32	87	639	48
12984	78	107	169	49
12152	135	134	1482	50

Schneider Electric has a range of products and services to suit you and your customers' needs – whether it's energy efficiency, metering, management or control, we've got the answer to make energy safe, reliable and efficient.





Your local and global partner of choice

By choosing Schneider Electric you are assured of a dependable partner you can rely on.

Dedicated to research and development, we are always introducing new products and services to give contractors a helping hand. We offer complete solutions to ensure you can deliver the best for your customers.

With a comprehensive range of products and services across electrical distribution, metering, management and control, you can count on us to deliver the goods.

The performance and safety of our products have been proven in use for years and in the most demanding environments, so we're always up to any challenge you give us.

By choosing Schneider Electric you are partnering with a company who is committed to protecting the environment. Not only are we always striving to improve our own energy efficiency, we provide systems and products to help you and your customers use electricity efficiently to make the most of your energy.

For more information call us on
0870 608 8 608 or visit
www.schneider-electric.co.uk

Schneider
Electric